

Wireless Modem Manual

Getting Started

1. Getting Started:

Before you use our products, you must first:

- 1.1 Have an active EDGE account with Service Provider
- 1.2 Have a properly configured SIM (Provided by the Service Provider) - facilitates permission to use network.
- 1.3 Install the products software, located on the installation CD.
- 1.4 Insert SIM card into the products SIM card slot..
- 1.5 Insert products into the PC card slot on your PC for Microsoft Windows to detect and configure.
- 1.6 Launch products, create a profile if necessary and select the Connect button.

2. System Requirements:

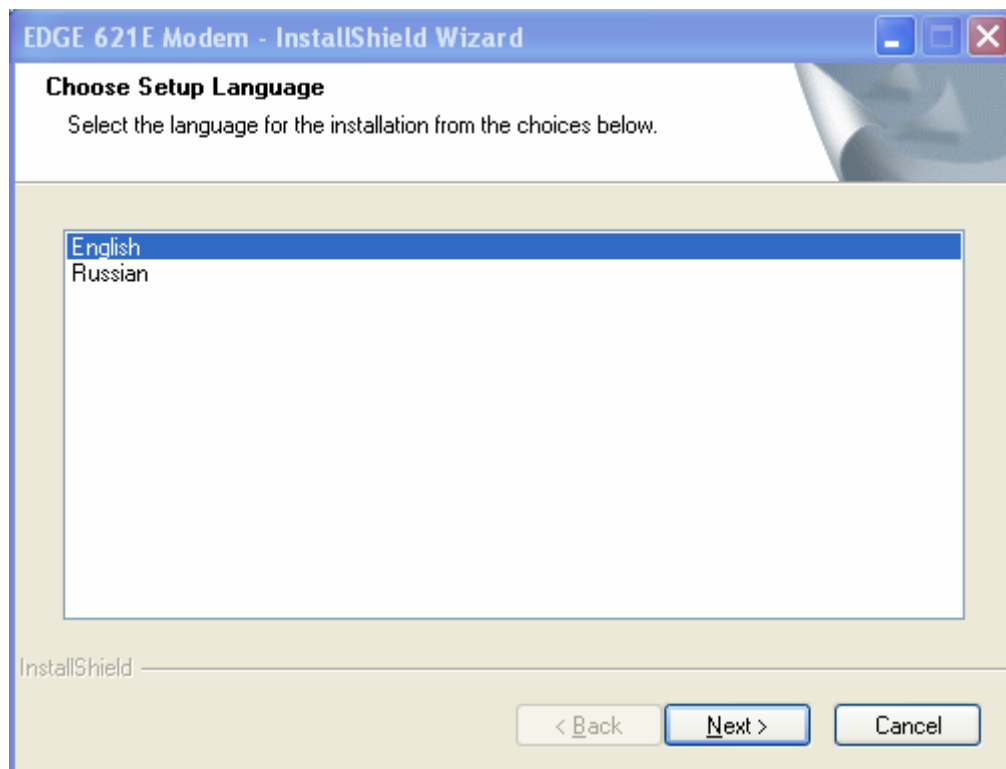
- 2.1 133 MHz or faster Pentium- compatible
- 2.2 Windows 2000 or Windows XP
- 2.3 At least 64 MB RAM
- 2.4 50 MB available hard drive space
- 2.5 CD-ROM drive

Installation

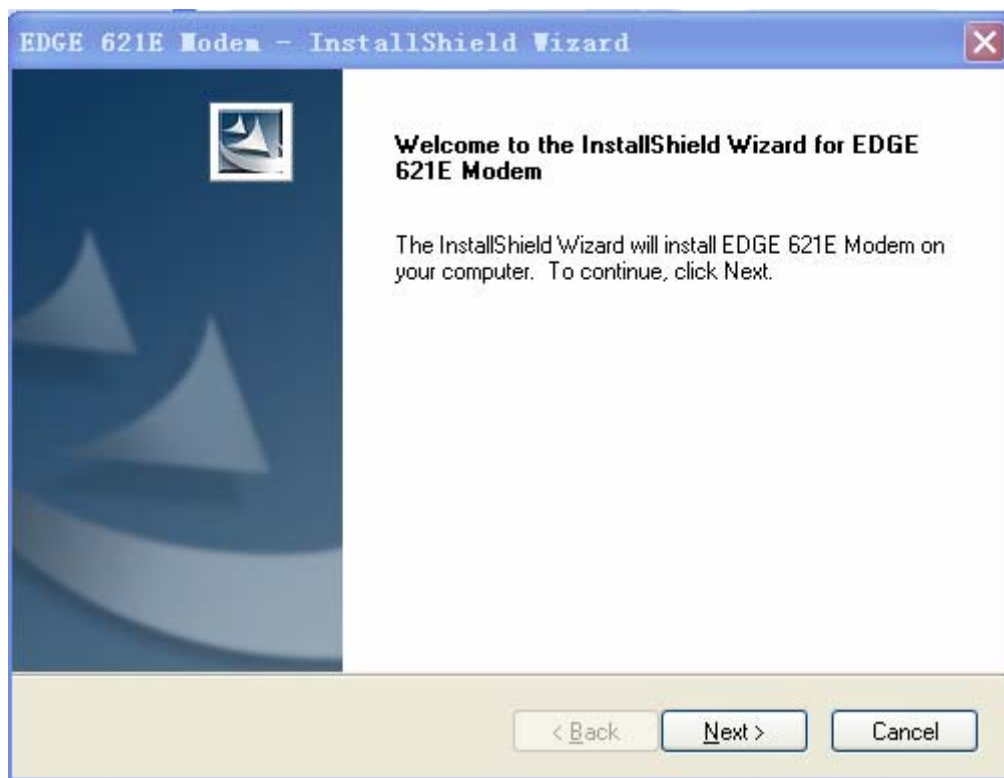
1. Driver Installation

1.1 Insert the CD that contains the products installation software into the CD-ROM drive of your computer, the installation procedures will start automatically. If the auto-run program does not start, to the drive path, and find setup.exe and double-click it on the CD

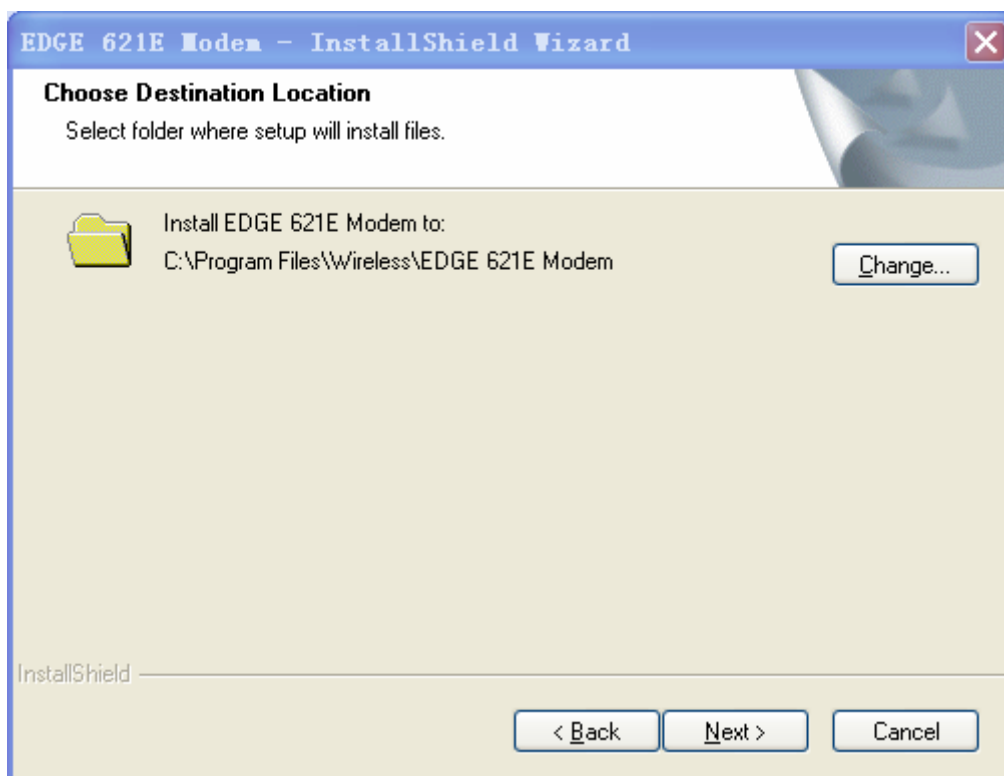
1.2 The **Choose setup language** window will appear as Figure 1. Please select installation language correspondingly.



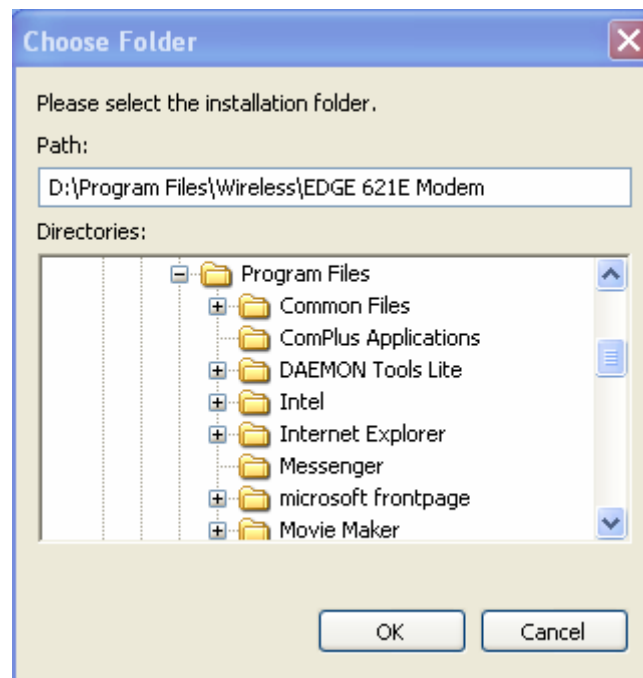
1.3 Following preparation the **Welcome to the Install Shield Wizard for EDGE 621E Modem** for products will appear. Read the information and click next



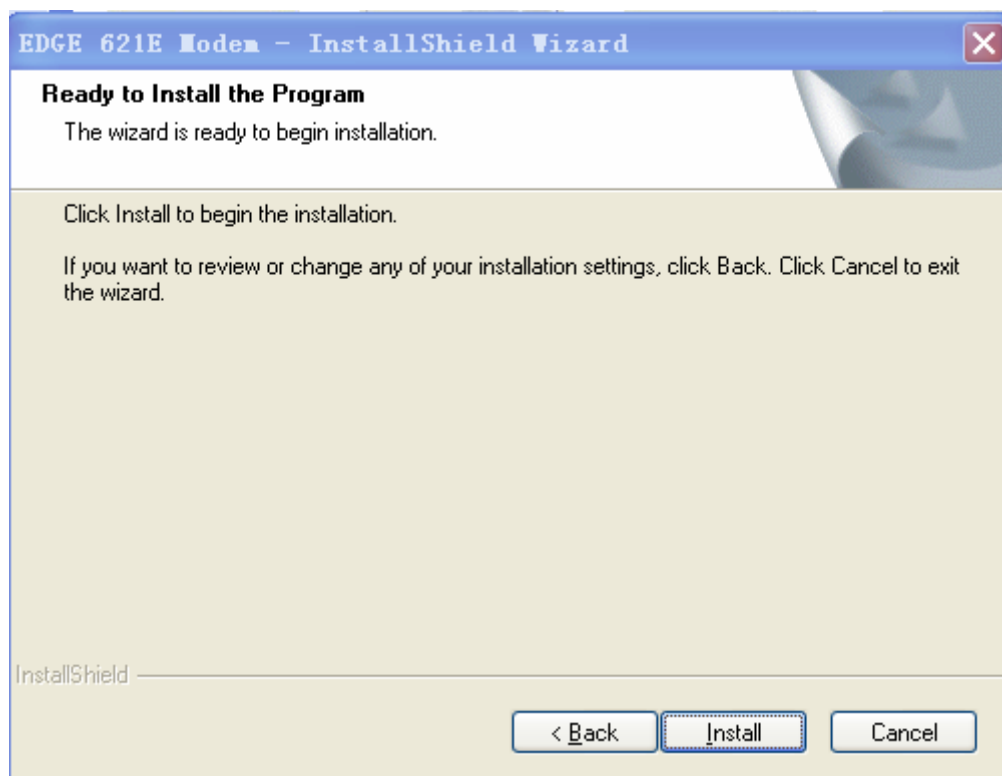
1.4 In installation path dialog, select the installation path, and then click **Next**.



1.4.1 Click **Change** to selected path here or will be store and the installation files to the default path, click **Next** for next step.

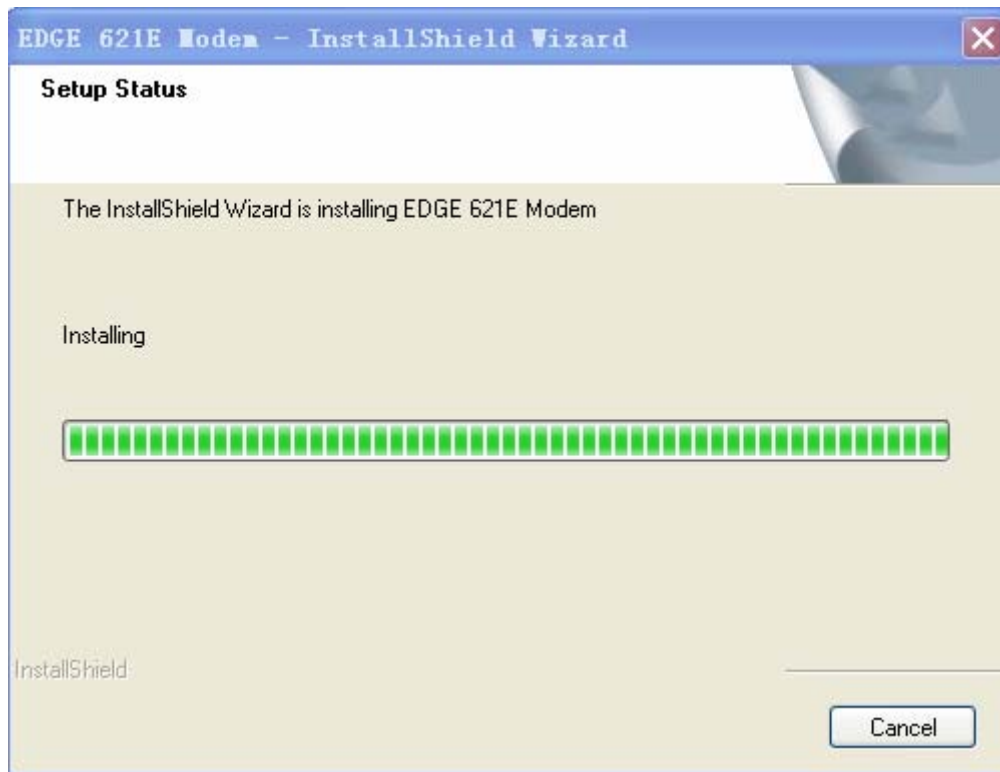


1.5 Following preparation "Start copying files" will appear. Read the information and click setup.

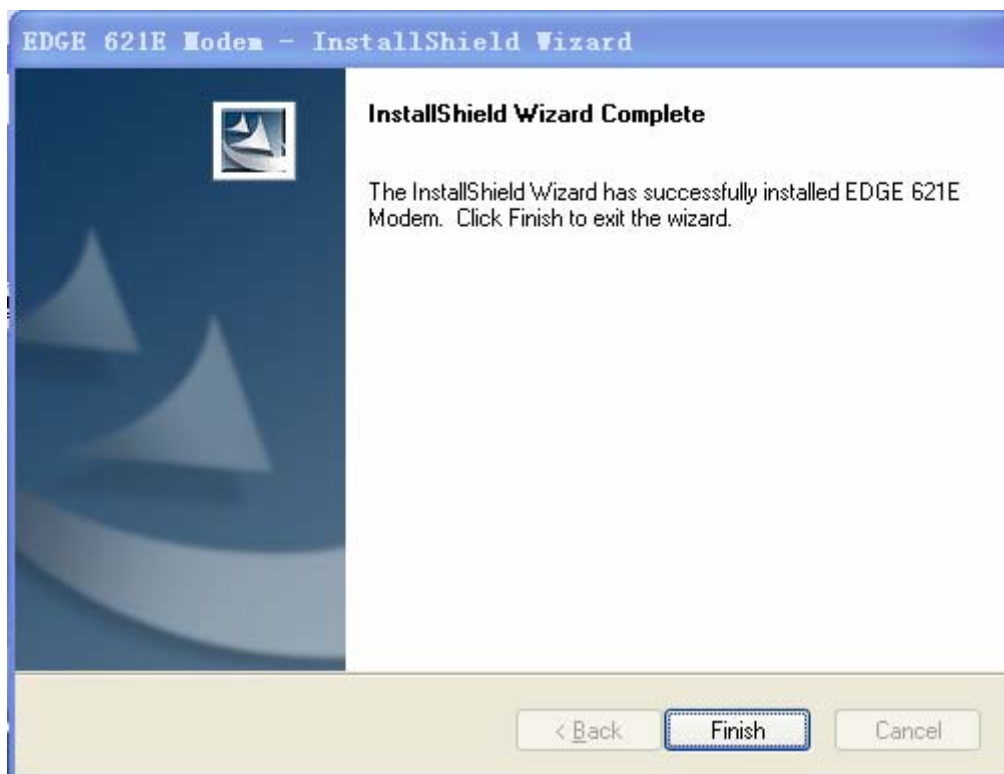


1.6 In the installation process will appear a dialog, please ensure that the wireless card has been correctly inserted in the computer. Otherwise, will be prompted to not find wireless card and can

not complete the installation.



1.7 Finally, you can complete the installation after click **Finish**



USING GUIDE



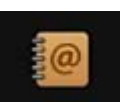
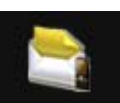
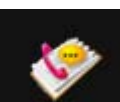

1. Management Interface

1.1 Entering products Manager interface, as below







1.2 Main program, which mainly includes the [Internet], [Call], [phonebook management], [SMS management], [call logs management], [settings] functions.

Shortcut Icons instruction

	Connect internet /Disconnect network
	Making a call
	View and modify the contacts of the phonebook
	Read/Create/Send/Forward the message(s)
	View/Delete the received calls/missed calls/dialed calls
	Settings for operator, such as APN, user name, passwords...

1.3 You can find the connected devices on the title bar., and find the time, signal strength



the numbers of unread SMS and missed calls.

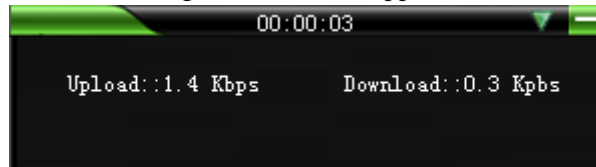
	Close the window showing flux by clicking the icon
	Strength of network signals.
	Numbers of unread SMS
	The number of missed calls


1.1. Internet Service

1.1 [Accessing the internet]




Click , access the internet successfully, the icon will changed to . The data of volume of Uploading and downloading showed on the upper left corner of the desktop, as below:



If you want to close it, you can click the  button on the title bar.

1.2 [Hang up]



Click  to disconnect the internet

2.2. Calls

2.1 [Call]




Click then will come out as below:




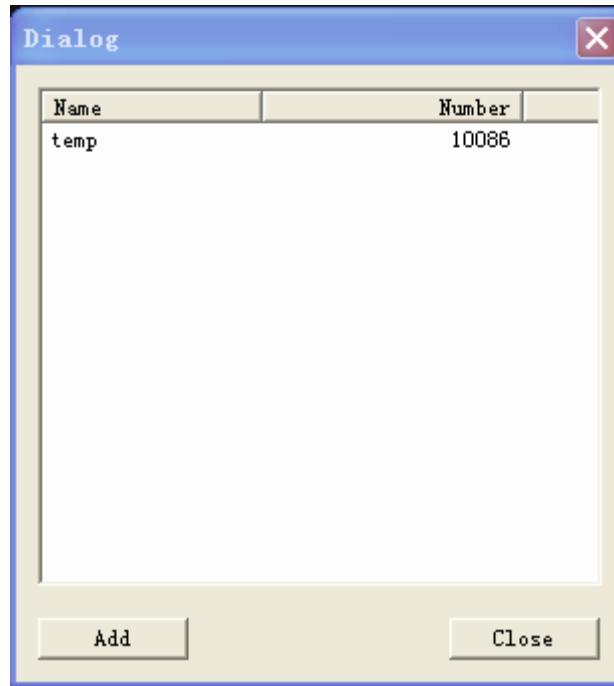
2.1.1 You may enter telephone number by clicking telephone keypad on the Call Service window or **1, 2, 3, 4, 5...** of the interface.

2.1.2 Click  to make a call

2.1.3 You can click  to cancel the input digit or to cancel the whole input number by clicking and holding it for a moment. Alternatively, you may also do it by pressing the Backspace key

2.1.4 Click  to hang up

2.1.5 Click  to open the phonebook; and can select the number from here.



2.1.6 Click **Add** to call after selected a phone number. If you click **Close**, window closed.


2.1.7 You can move  to adjust the volume.

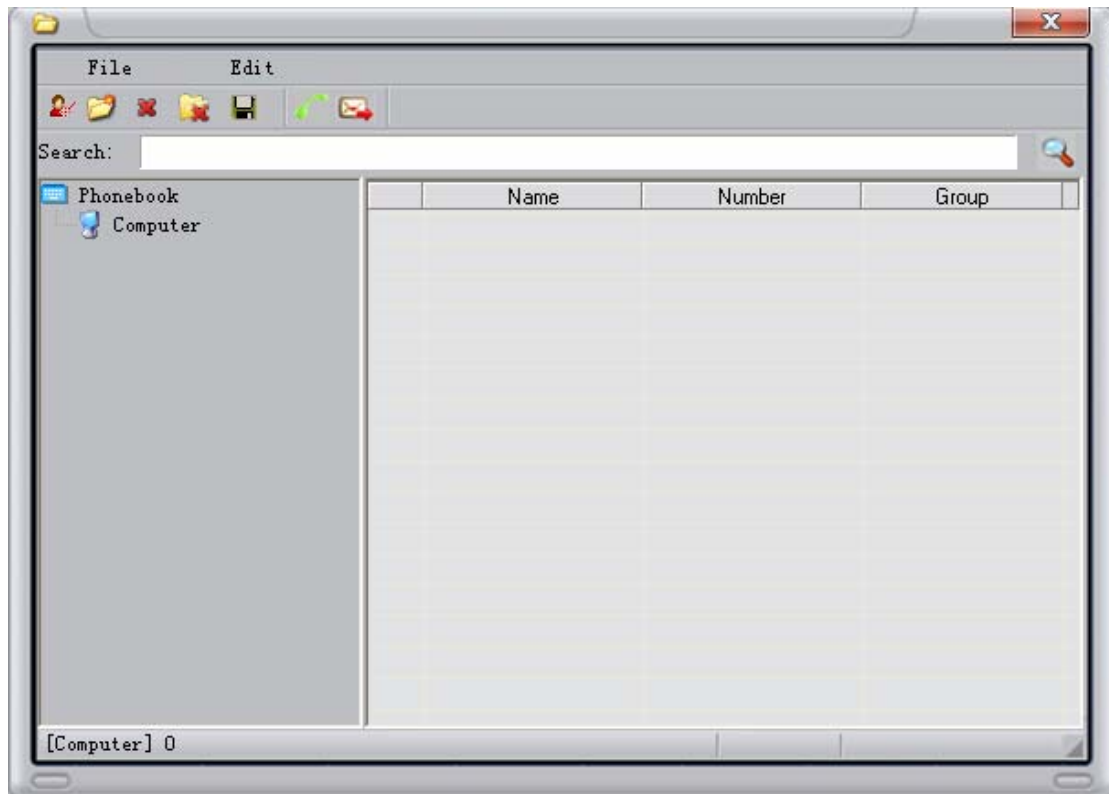
2.1.8 Click **ESC** or click  to close the interface.

3. Phonebook

3.1 [Phonebook]



Click , then access to the interface, as below:



3.1.1 Menu

3.1.1.1 [File]

File contains **computer**, **Exit** options

Computer: You can view all telephone information here

Exit: exit the window.

3.1.1.2 [Edit]

Edit contains **Add group, Add Contacts, Delete group, Delete contacts, Modify, Delete all** options.

Add group You can create a group for contacts.



A dialog box titled "Add Group" with a close button (X) in the top right corner. It contains a label "Group:" followed by a text input field. Below the input field are two buttons: "Ok" and "Return".

After inputting group name, click **ok** button to finish.

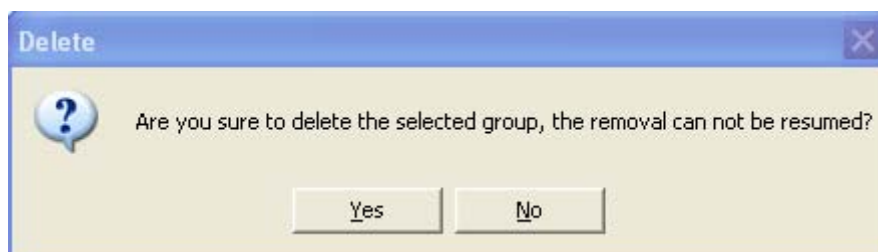
Add contacts You can add a contact in this window.



A dialog box titled "Add number" with a close button (X) in the top right corner. It contains three labels: "Name", "Number", and "Group". Each label is followed by a text input field. The "Group" field is a dropdown menu with "temp" selected. Below the input fields are two buttons: "Ok" and "Return".

After inputting name and telephone number, you can save them in the selected group.

Delete group You can delete the selected group, and a window will come out, as below:

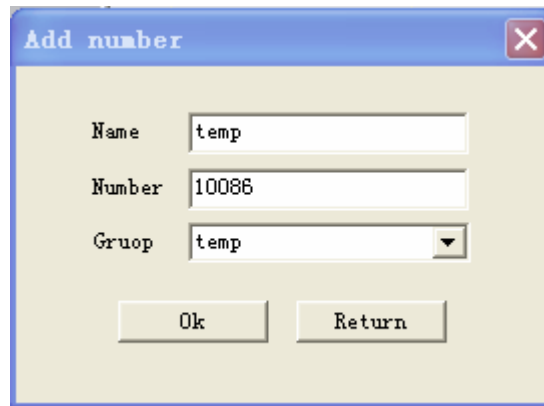


A dialog box titled "Delete" with a close button (X) in the top right corner. It features a question mark icon in a blue circle on the left. To the right of the icon is the text: "Are you sure to delete the selected group, the removal can not be resumed?". At the bottom are two buttons: "Yes" and "No".

Yes delete the group, **No** close the window.

Delete contacts You can delete the selected.

Modify, modify information of selected.





A dialog box titled "Add number" with a close button (X) in the top right corner. It contains three input fields: "Name" with the text "temp", "Number" with the text "10086", and "Group" with a dropdown menu showing "temp". At the bottom, there are two buttons: "Ok" and "Return".


Click **OK** to finish.

Delete all, delete all telephone number.

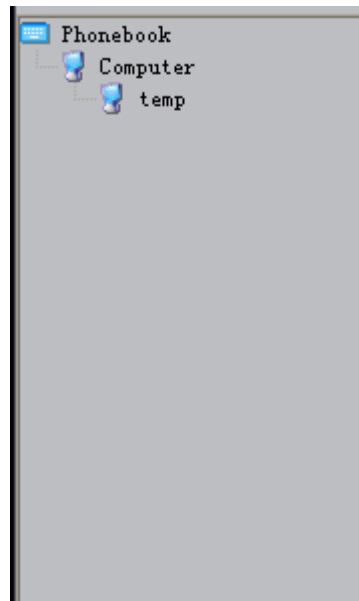
3.1.2 Toolbar

	Add a contacts
	Create a group
	Delete a contacts
	Delete a group
	Save the number into the Designated group
	Call
	Create SMS

3.1.3 Search

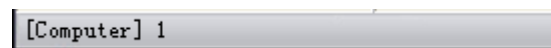
Input the content in here and click  to search

3.1.4 Dendriform tool



You can get all the information through this tool.。

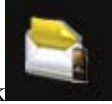
3.1.5 Task bar

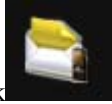


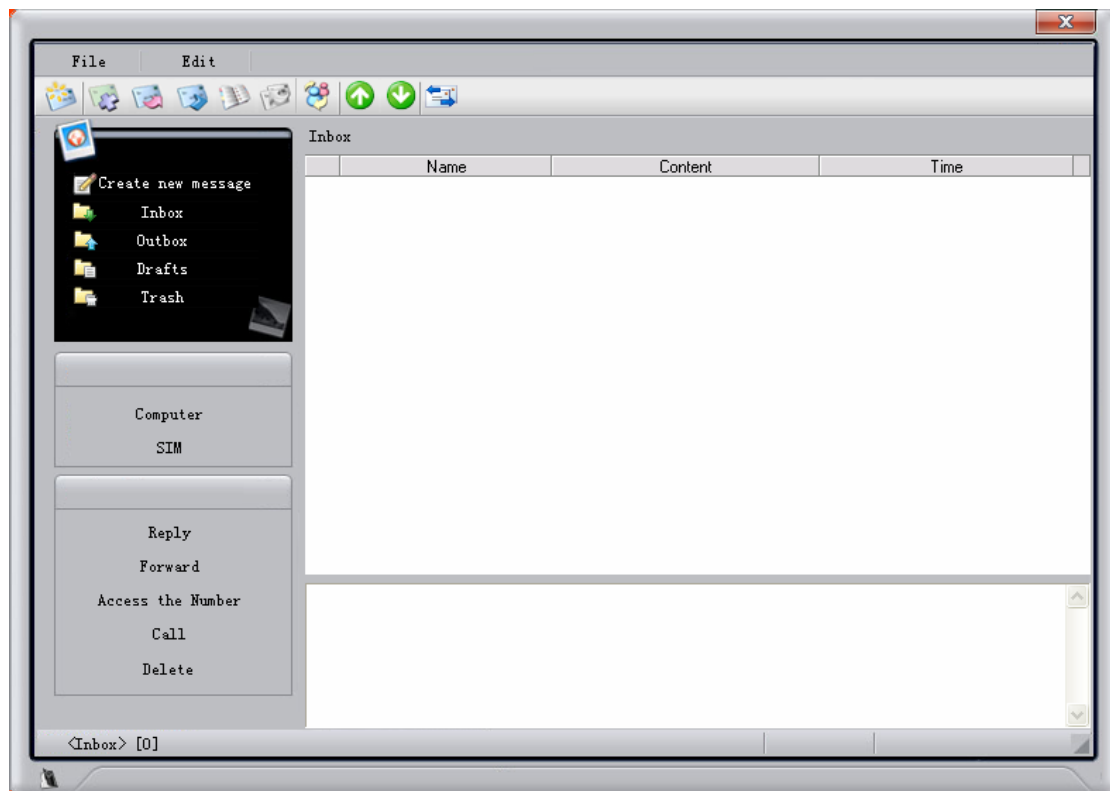
You can know the total numbers of the phone numbers

3.3. SMS

3.3.1 [SMS]



Click , next as below:



4.1.1 Menu

4.1.1.1 [File]

File contains **Computer**, **SIM**, **Exit** options

Computer, You can view all SMS information.

SIM: You can view all SMS of SIM card.

Exit: exit the window.

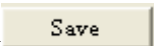
4.1.1.2 [Edit]

Edit menu contains **Reply**, **Forward**, **select all**, **Delete**; **Access the Number** options

Reply: You can restore the SMS of selected.

You can input the phone number or click the **Phonebook** button to selected phone number.
Input SMS content into the content box.

Click  to send SMS.

Click  to save the SMS into Inbox.

Chick  to close the window.

Forward You can transmit SMS of selected



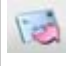


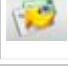
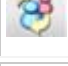


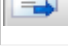
Select all All SMS information be selected.

Delete Delete SMS information of selected.





Access the Number Access the Number of selected.


After inputting name and selecting group, you can save it by click "OK"

4.1.2 Tool Bar

	Create new SMS
	Delete selected SMS
	Reply selected SMS
	Transmit selected SMS
	Access the Number of selected
	Resume have deleted SMS of Selected
	Call the Selected
	Up
	Down
	Copy to computer of the selected from SIM card

4.1.3 Left control panel


	Create new SMS	
	listed SMS of inbox	Reply Reply selected SMS Forward forward selected SMS Access the Number Access the number of selected SMS Call Call the number of selected SMS Delete, Delete selected SMS
	listed SMS of outbox	"Send" send selected SMS Forward forward selected SMS Access the Number Access the number of selected SMS Call Call the number of selected SMS Delete, Delete selected SMS
	listed SMS of Drafts	"Edit" Edit Selected SMS "Delete" Delete Selected SMS

 Trash	listed SMS of Trash	Recover , Restore the deleted information Delete , delete selected information Access the Number Access the number of selected SMS " Call , Call the number of selected SMS
--	--------------------------------	--

5. Call logs

5.1 [Call logs]



Click , next as below:

Call log X

Missed calls | Received calls | Dialled calls

Name	Number	Time	Call time

Delete Voice Call SMS Access the Number

Contains **Missed calls**, **Received calls**, **Dialed calls** options

Call log X

Missed calls | Received calls | Dialled calls

Name	Number	Time	Call time

Delete Voice Call SMS Access the Number

You can view all the missed calls information in the window.

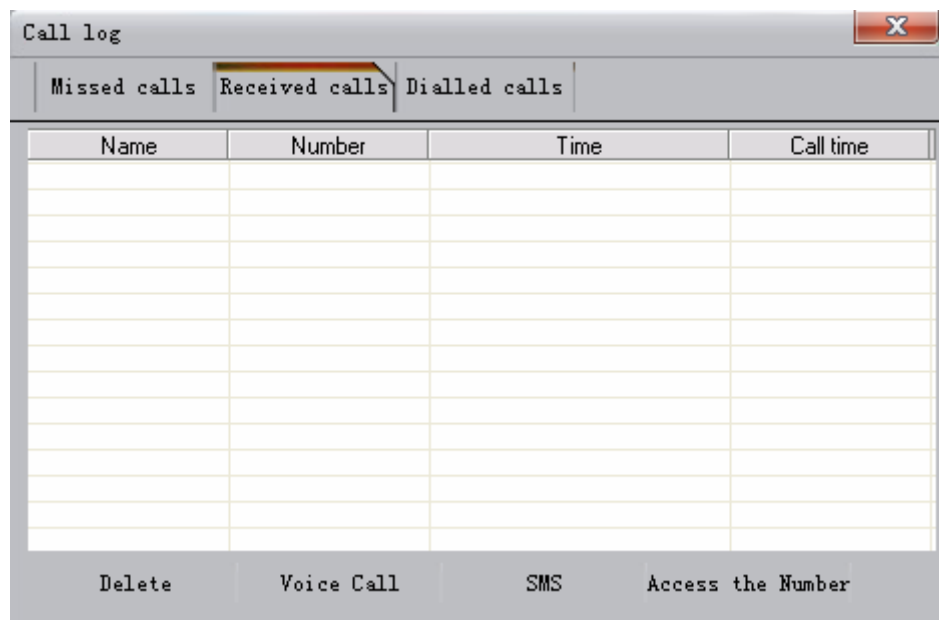
Delete, delete all missed calls information.

Voice Call Call the selected phone number.

SMS Create a new SMS by selected phone number.

Access the Number Access phone number from selected SMS

5.2 [Received calls]



Name	Number	Time	Call time

Delete Voice Call SMS Access the Number

You can view all the received call in the window.

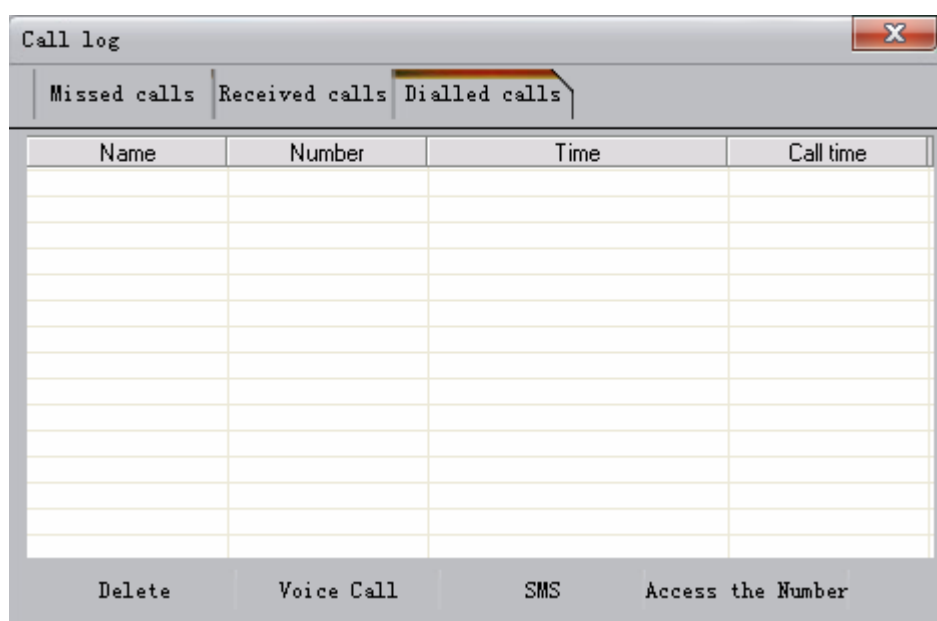
Delete, Delete all received call information.

Voice Call, Call the selected phone number.

SMS Create a new SMS of selected phone number.

Access the Number Access phone number of selected SMS

5.1.2 [Dialed calls]



Name	Number	Time	Call time

Delete Voice Call SMS Access the Number

You can view all the dialed calls in the windows

Delete, delete all called information.

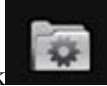
Voice Call, call the selected phone number.

SMS Create a new SMS of selected phone number.

Access the Number Access phone number of selected SMS

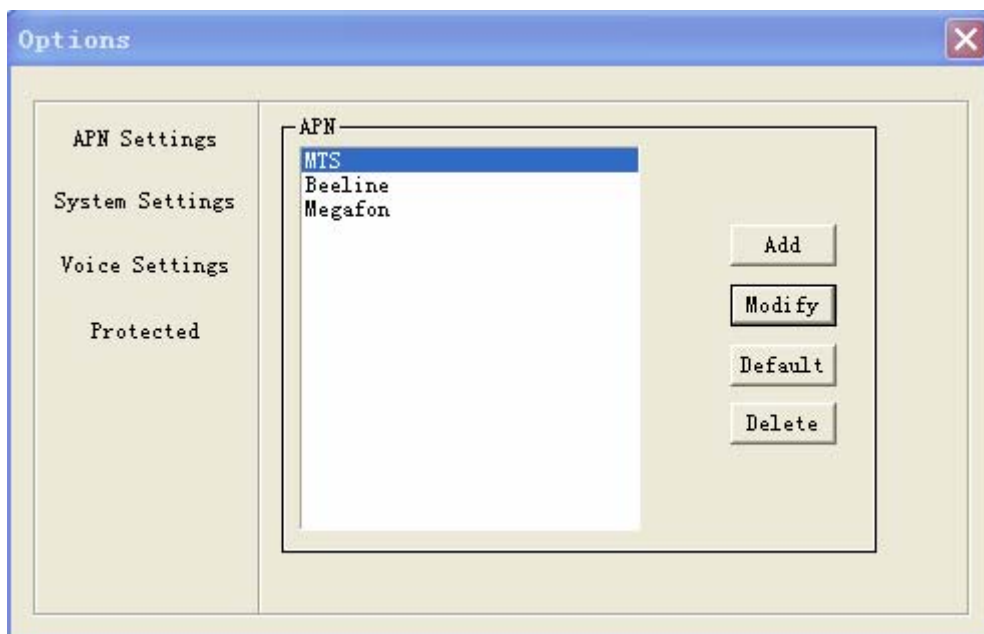
6. Settings

6.1 [Settings]



Click , there're three options **[options]**,**[select network]**,**[language]**,**[About]** .

6.1.1 [Options]




6.1.1.1 [APN Settings]

All the APN information showed in the list box.

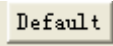
Click  to set new APN

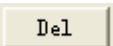
A screenshot of a standard Windows-style dialog box with a blue title bar and minimize, maximize, and close buttons. The dialog contains seven text input fields arranged vertically, each preceded by a label: "Name:", "User:", "Password:", "APN:", "Number:", "DNS1:", and "DNS2:". The "DNS1" and "DNS2" fields are pre-filled with four dots (". . . ."). At the bottom of the dialog are two buttons: "Ok" and "Cancel".

Click  to revise the APN

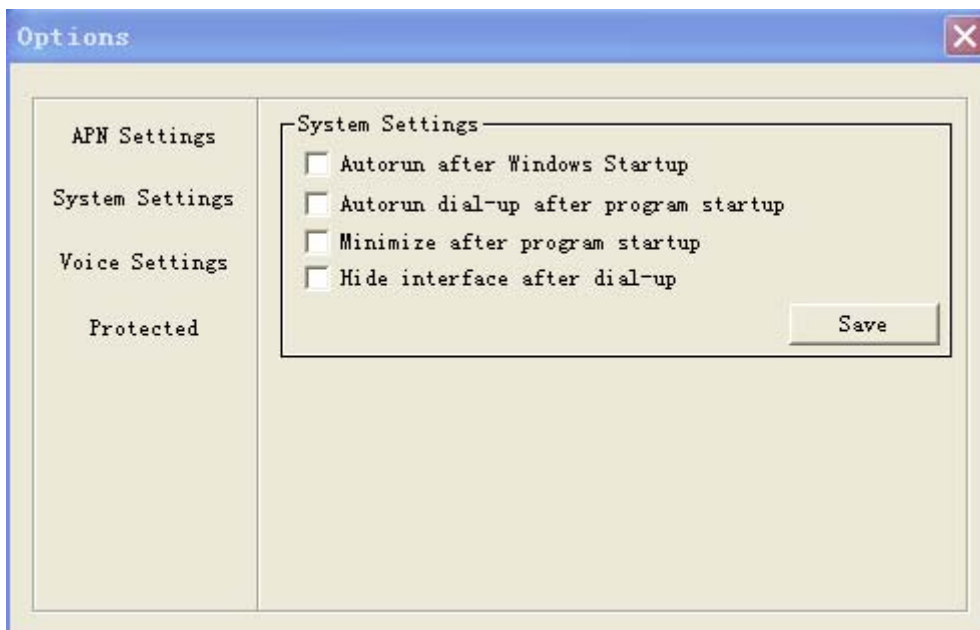
A screenshot of the same APN configuration dialog box, but now with data entered into the fields. The "Name:" field contains "temp", "APN:" contains "*99#", "Number:" contains "cmnet", and both "DNS1:" and "DNS2:" fields contain "0 . 0 . 0 . 0". The "User:" and "Password:" fields remain empty. The "Ok" and "Cancel" buttons are still at the bottom.

Click "OK" to save it.

Click  to restore the default value

Click  to delete selected APN.

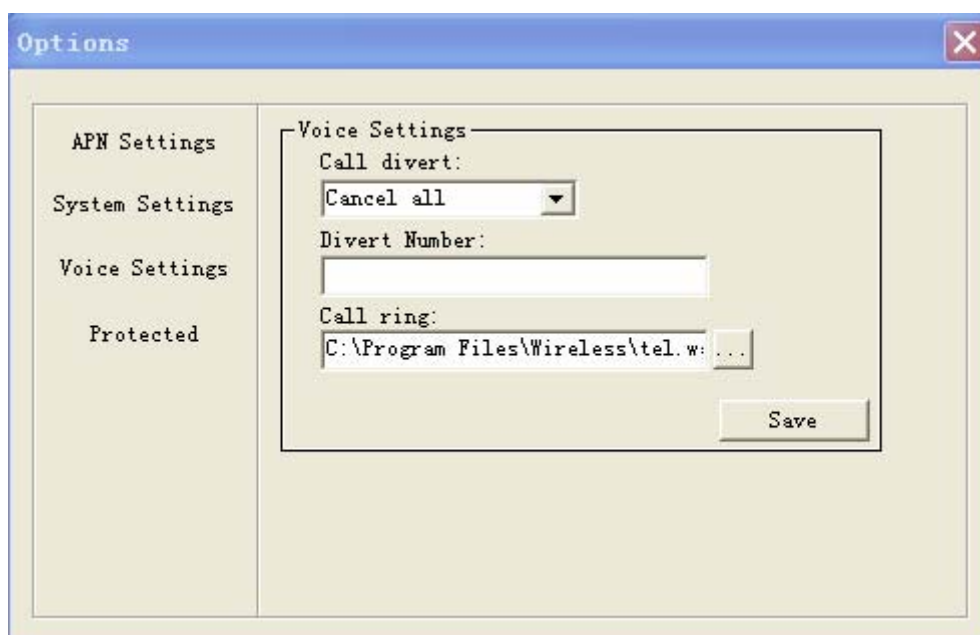
6.1.1.2 [System settings]

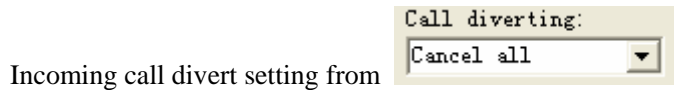


<input type="checkbox"/> Autorun after Windows Startup	the software will run automatically when the computer startup next time
<input type="checkbox"/> Autorun dial-up after program startup	Dial-up automatically after the software startup next time
<input type="checkbox"/> Minimize after program startup	Minimize when software startup
<input type="checkbox"/> Hide interface after dial-up	software be hided after connected

You may click **Save** to save it.

6.1.1.3 [Voice Settings]





Incoming call divert setting from

Five options **Divert all calls**, **Divert when it is busy**, **Divert when no reply**, **Divert when unreachable**, **Cancel all**

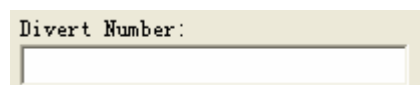
Divert all calls All calls will be diverted to the appointed phone number.

Divert when it is busy diverted the incoming calls when calling

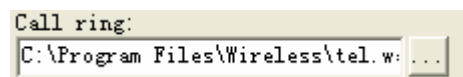
Divert when no reply: diverted when nobody replied

Divert when unreachable diverted when not connected.

Cancel all: Cancel all the diverting



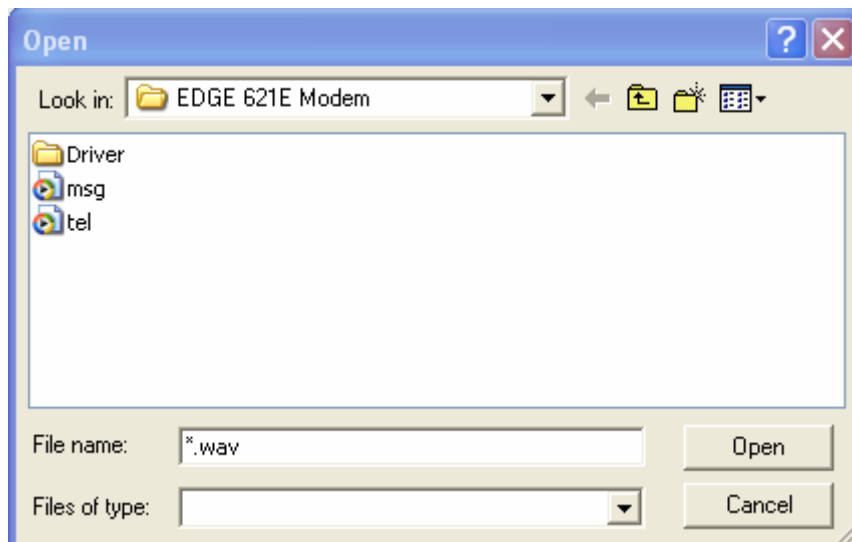
Be diverted to the designated telephone number.



Ring of the incoming calls

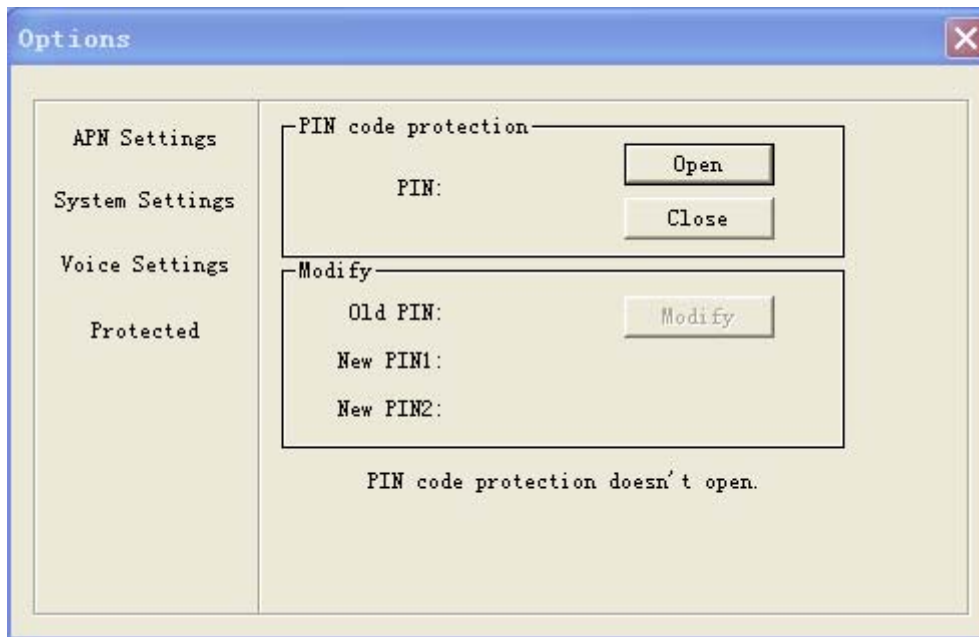


Select the ring



Click **Save** to save the settings

6.1.1.4 [Protection]

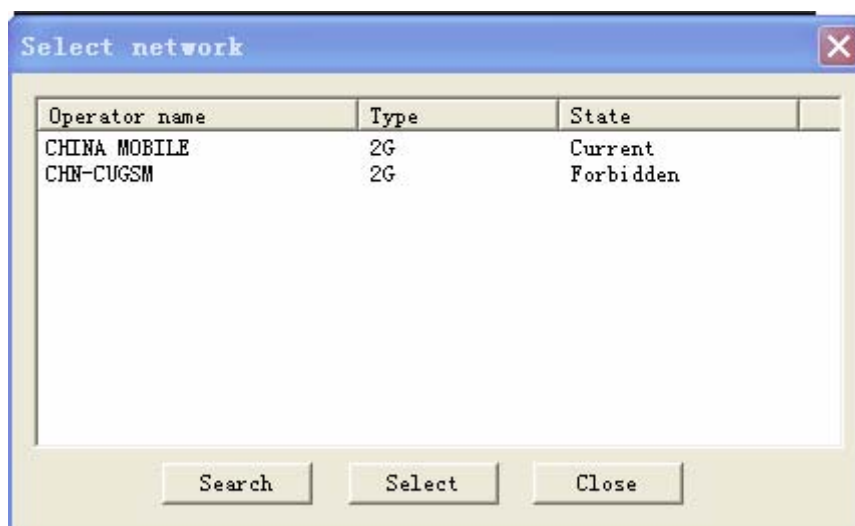


Open Open PIN protection, Input correct PIN number.

Close Close PIN protection, Input correct PIN number.

Modify If opened PIN protection, you can revise the PIN number.
Input new PIN number in the **New PIN1** and **New PIN2**.

6.1.2 [Select network]

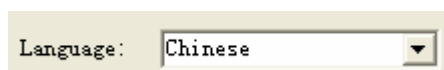


Search; search the operator of the net

Select Set the selected operator as default one

Close, close the window.

6.1.3 [Language]



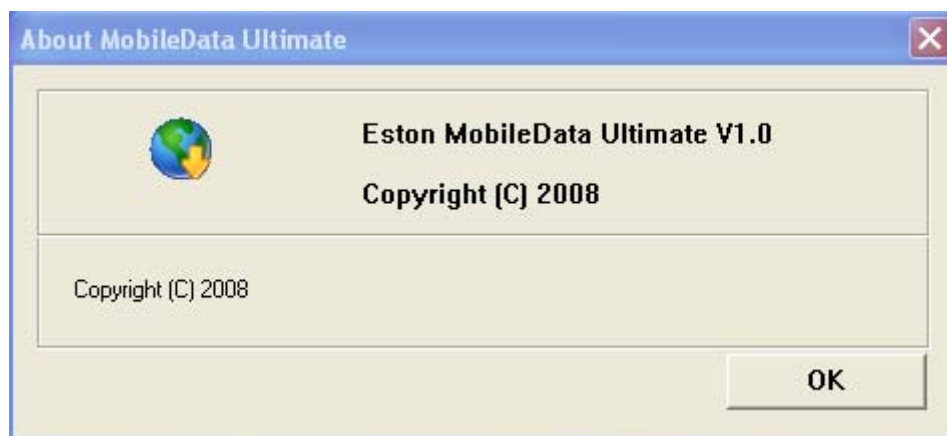
Select your language.

Click **OK** to save the selected language

6.1.4 [About]

Show information about the software.

Example:

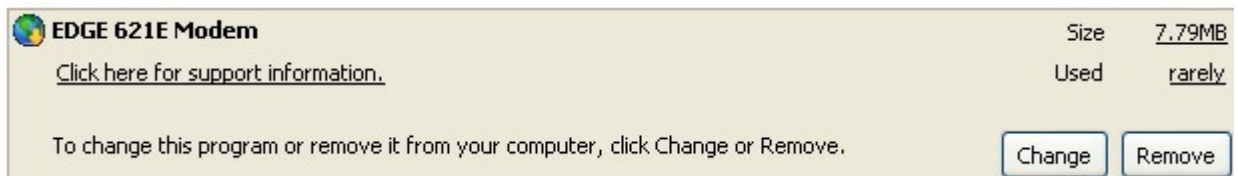


4. Uninstallation

4.1 Unloading from the control panel

4.1.1 open **Add or Remove Programs** after opened control panel

4.1.2 Click **Change or Remove Programs** then find the **Wireless Modem** Programs.

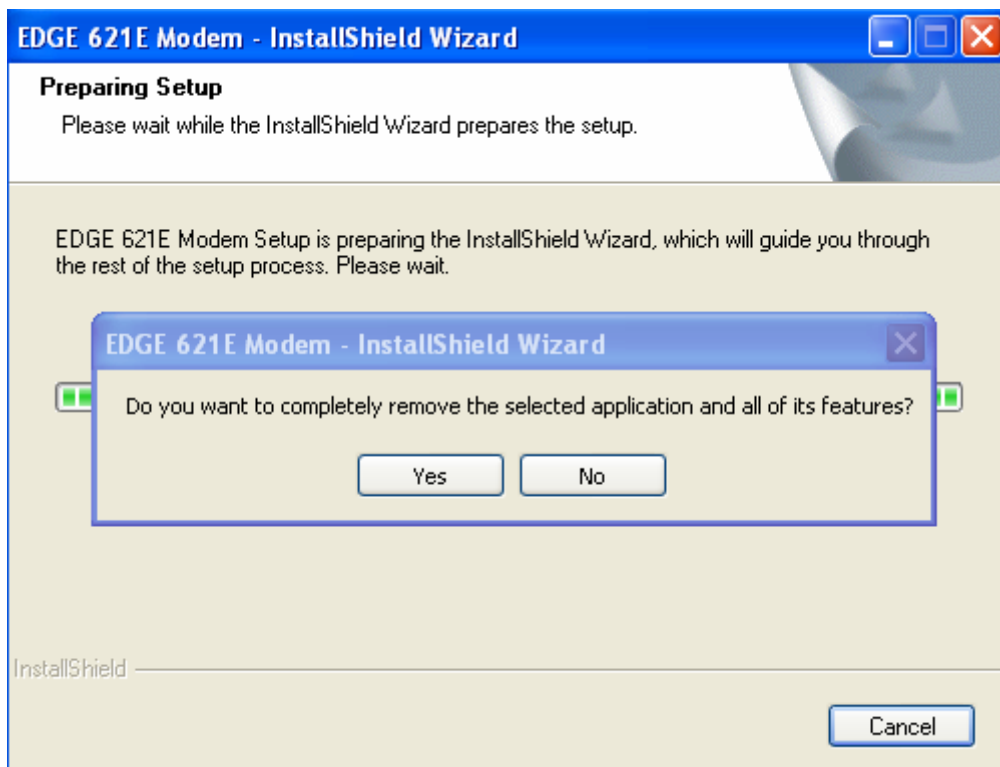


4.1.3 Click "**Remove>Yes**", the software will be uninstalled

4.2 Unloading form **Start** Menu.

4.2.1 Choose **Start-> All Programs ->Wireless Modem->Uninstall EDGE Mobile Connect**.

Choose language according to yoursystem.



4.2.2 Select **Yes**, the software will be uninstalled